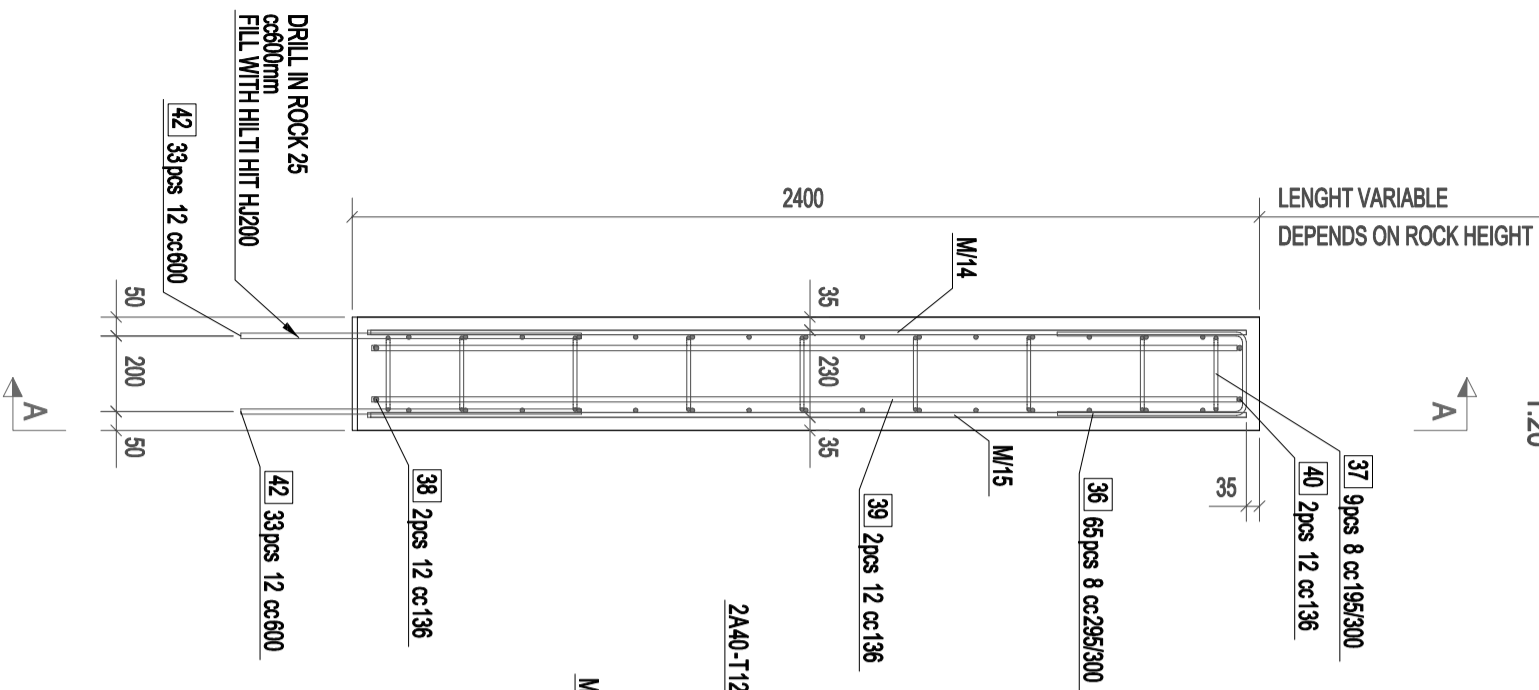
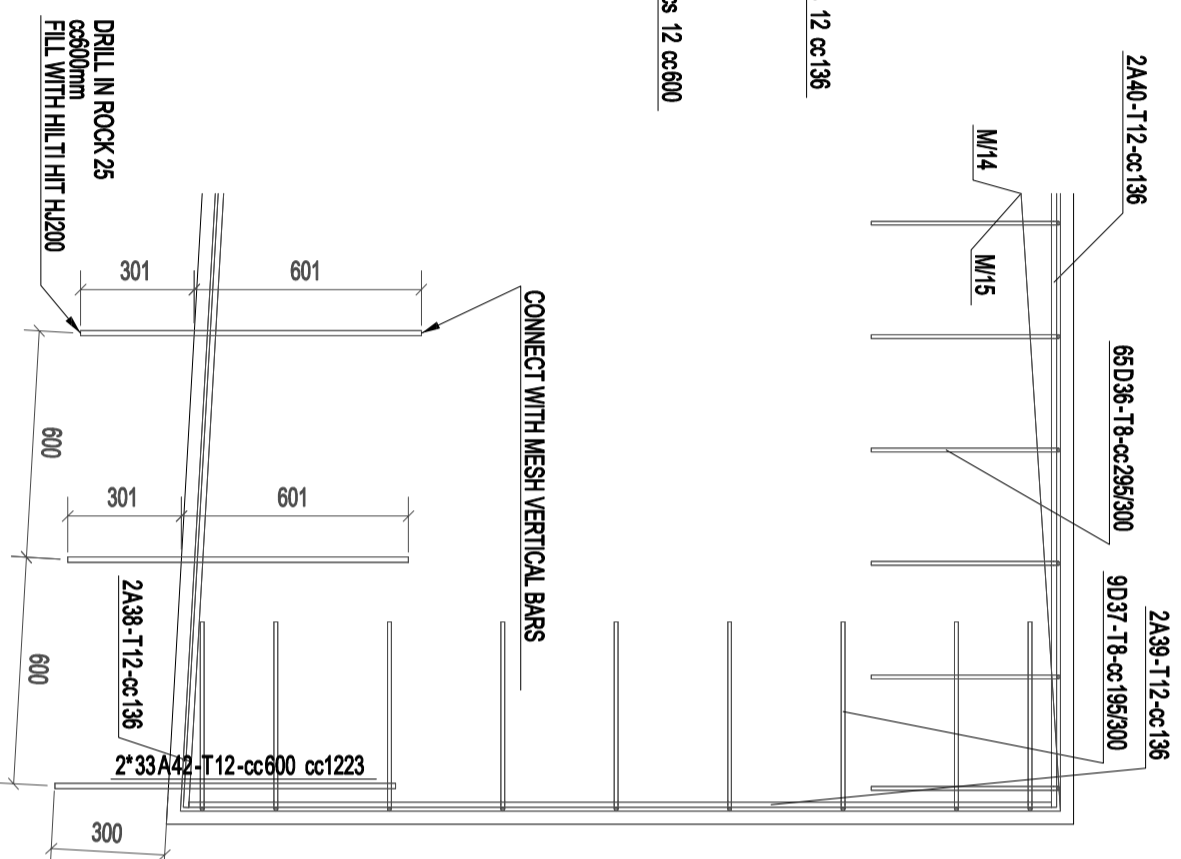


RETAINING WALL

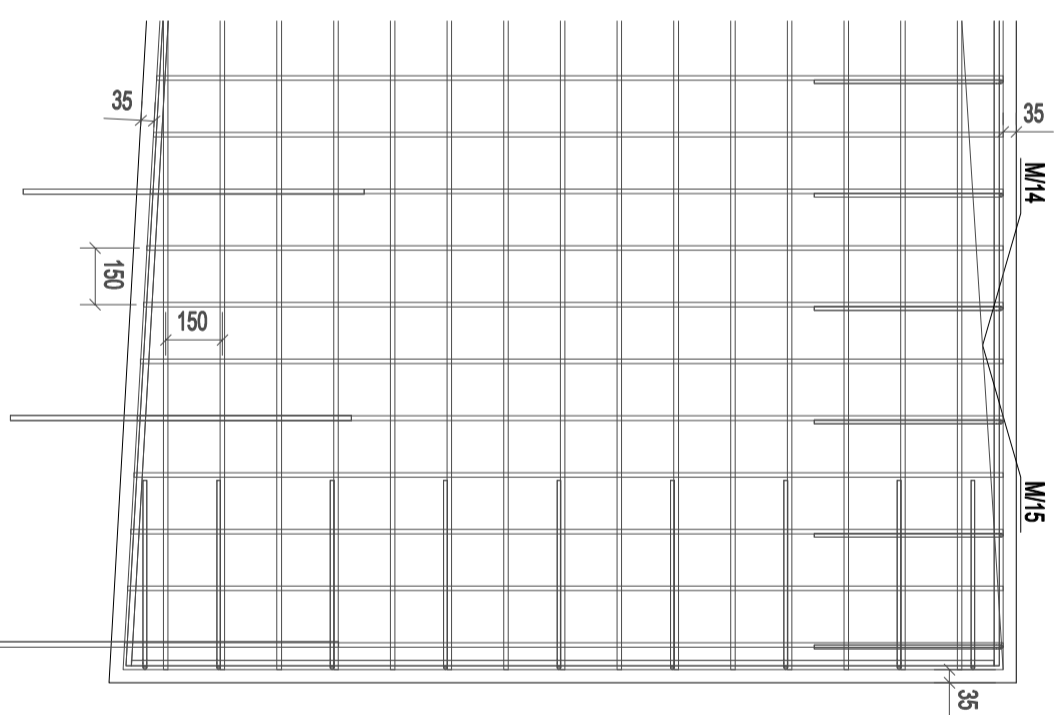
1:20



A - A
1:20



MESH
1:20



Demolding after reaching 70% from concrete strength.															
Tolerance class:	A	Surface treatment:		Surface quality:		Chom =		Chamber size:		REI:					
CONCRETE / REINFORCEMENT SPECIFICATION:															
Element:		Quantity:	Concrete class:	w/c ratio:	Concrete volume (m³):	Weight (kg):									
	1		C30/37 XC2 XA1		10,77	25840,9									
Reinforcement:															
Type:	Pos:	Quant:	Grade:	L	a	b	c	d	e	u	v	D	kg/1:	kg/total:	
	A	38	B500B	12	19340	19341							17.2	34.3	
	A	39	B500B	12	2280	2282							2.0	4.1	
	A	40	B500B	12	19310	19310							17.1	34.3	
	A	42	B500B	12	900	901							0.8	52.8	
	D	36	B500B	8	1180	500	220	500					32	0.5	30.3
	D	37	B500B	8	1160	500	200	500					32	0.5	4.1
													Reinforcement total weight (kg):	160,0	
Mesh:															
Pos:	Quant:	Grade:	Mesh size:	d/d - s/s (d-diameter; s-step)	kg/1:	kg/total:									
M/14	1	B500B	19330	x 2327	10/10-150/15	279,5	279,5								
M/15	1	B500B	19330	x 2327	10/10-150/15	279,5	279,5								
													Mesh total weight (kg):	559,0	
REINFORCEMENT TOTAL (kg):													719,0	ELEMENT TOTAL WEIGHT (kg):	26559,9

+46 (0) 70 435 87 57
info@skandlink.se
Kungu iela 51, Liepāja,
Latvia LV-3401

OBJEKT:
Troša Tureholm 2.415

KUND:
Erik Hedenstedt

TECKNING:
RETAINING WALL

SKALA:	1:20	REV:	
RITAD:	G.LORMANIS	DATUM:	22.04.2022
DEL AV PROJEKTET:			
RITNINGSNUMMER: BK-04			